

# How to Build Model Structure

- Packages in the Browser window -

Takeshi Kouno

Sparx Systems Japan

# Who am I

## Takeshi Kouno

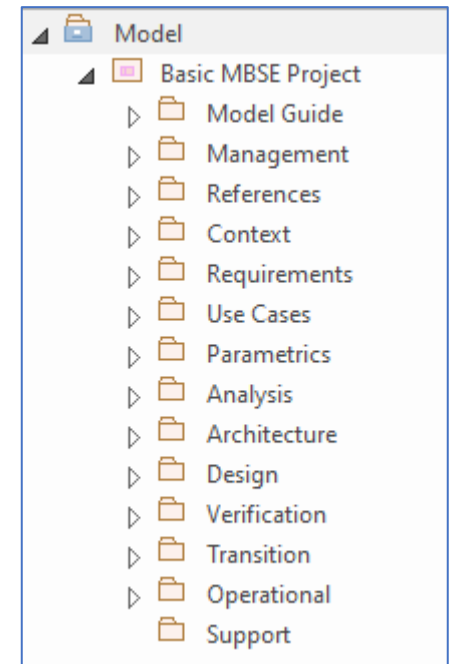
- CEO and Founder of Sparx Systems Japan (2003-)
  - Number of Enterprise Architect users in Japan:
    - 71 in 2003
    - 60,000+ in 2021
- My first Enterprise Architect was version 3.0
- I joined the Global Summit Teams 'Sparx Systems Japan' Group. If you have any questions, please post them to the Group.

# Summary of this Presentation

We usually create and use many Packages in the Browser Window, but efficiency depends on how to build the structure.

I would like to share basic information about the Browser and some key ideas to build the structure.

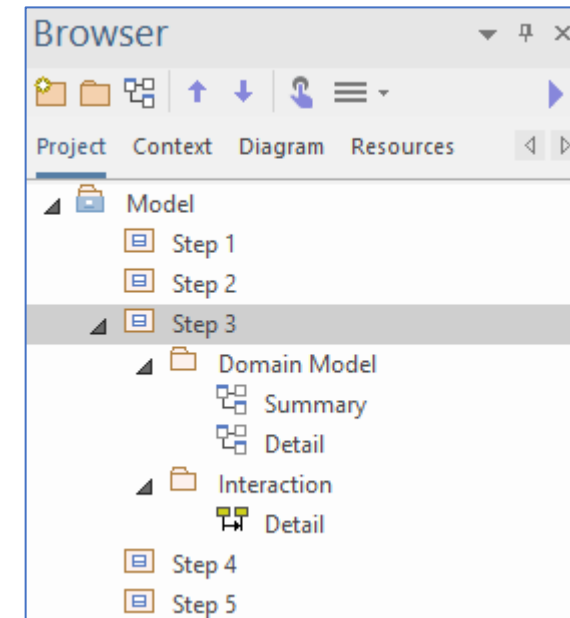
In older version of Enterprise Architect, the Browser was called 'Project Browser'.



# Why Structure is important?

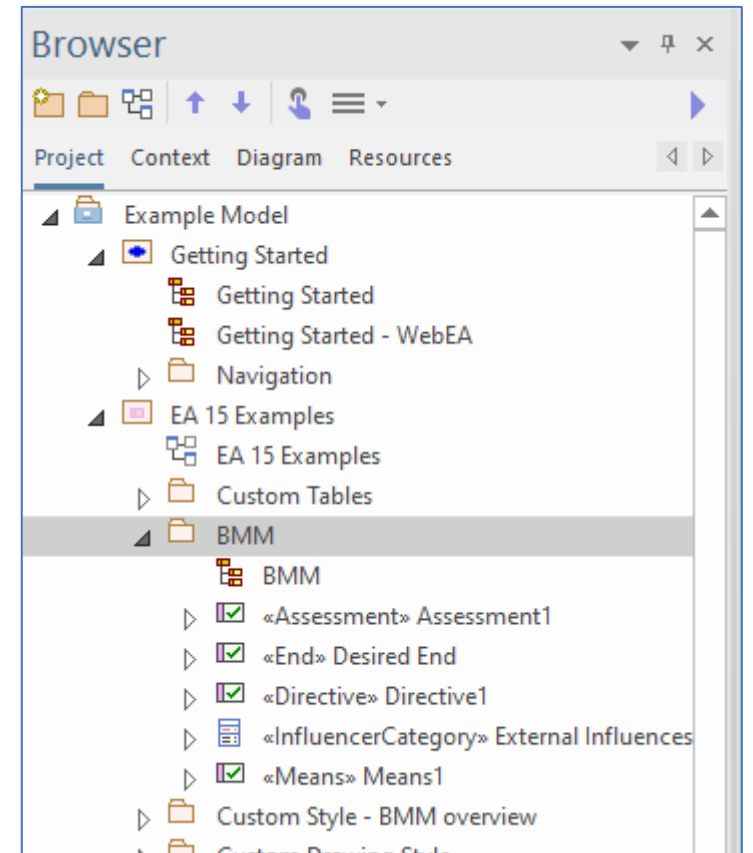
Structure in the Browser is important because of:

1. Efficient modelling - easy to find what we want
2. Framework of Process and Product - specify how and what we need to do
3. Integrity and Consistency - able to confirm/assure that all necessary information are included



# Items in the Browser, 'Project' Tab

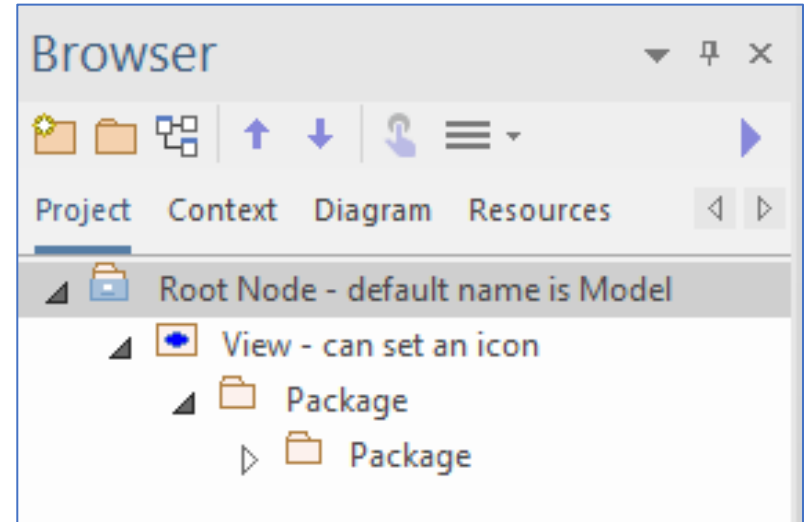
- Root Node (named 'Model')
- Package
- Diagram
- Element
  - Connectors are not shown in the Browser
  - Some types of elements (e.g. Notes, Hyperlinks) on the version 15.2
- Feature (Attribute, Operation and Reception)



# Root node, View and Package


We have 3 kind of folders in the Browser:

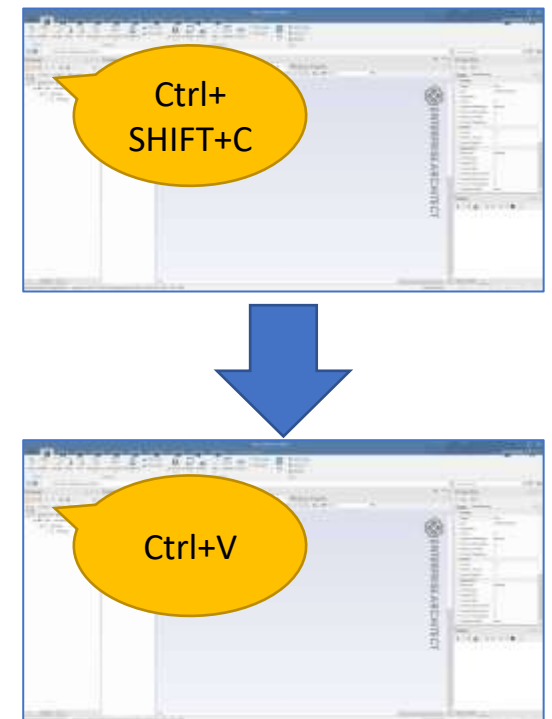
- Root Node ('Model'): top level folders
  - View: child folders under Root Node
  - Package: all other folders
- 
- Root node cannot have diagrams and elements
  - Two or more Root nodes can be added
  - View can have a special Icon, shown in the Browser
  - Why there are Views? - just historical reason



# Modify Structure

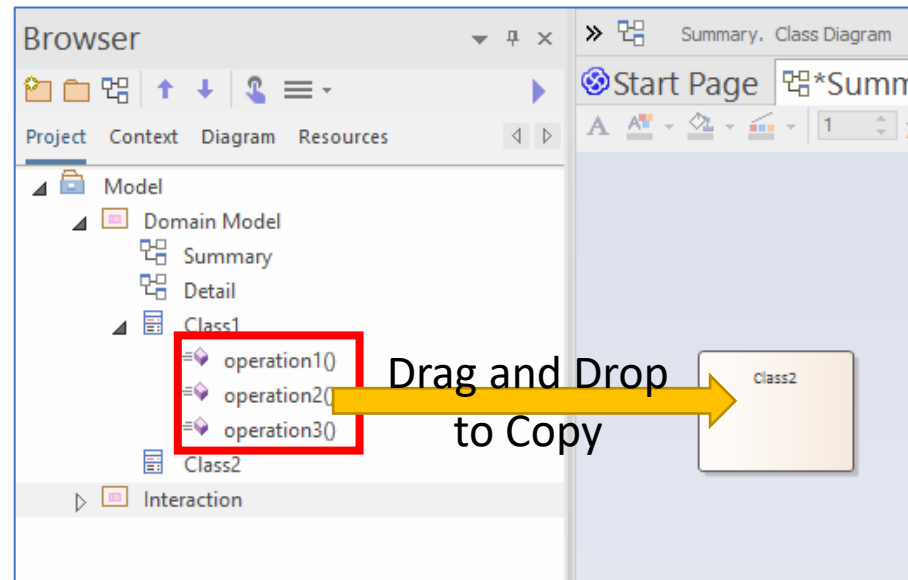
Basically we can move items in the Browser by drag and drop

- We can NOT move diagrams and elements under a Root node
- Now we can move Views under Packages (On older versions, we couldn't)
- We can NOT copy existing structure by drag and drop
  - You can call this procedure by the context menu
  - Ctrl+SHIFT+C and Ctrl+V combination is the easiest to copy
- We can NOT change order by drag and drop
  - Toolbar buttons in the Browser 
  - Ctrl+Up/Down arrow is the easiest to change



# Useful Operations and Tips in the Browser

- Drag from the Browser to a Diagram
  - Copy features (attributes, operations and receptions) - drag it onto a target in a diagram
  - Create a Sequence message - drag an operation onto a Sequence diagram
  - Create a Realization - drag a Requirement onto a element in a diagram
  - Create an ActivityPartition - drag a SysML Block onto a SysML Activity diagram
  - and much more...



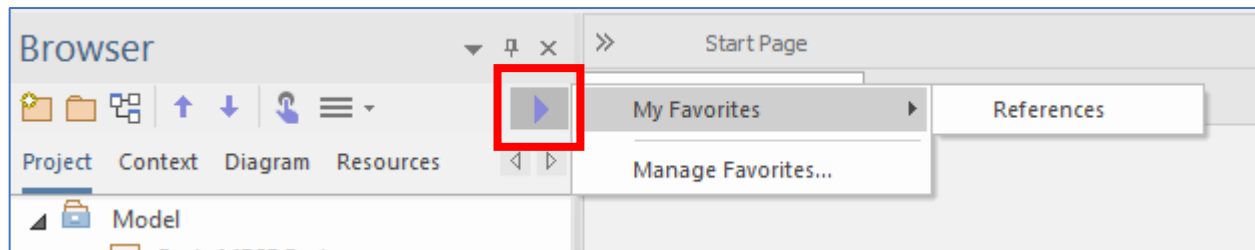


# Useful Operations and Tips in the Browser

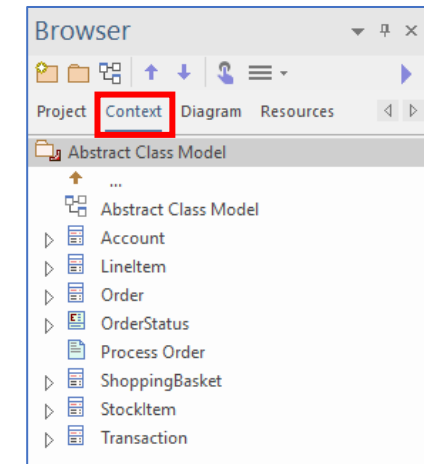
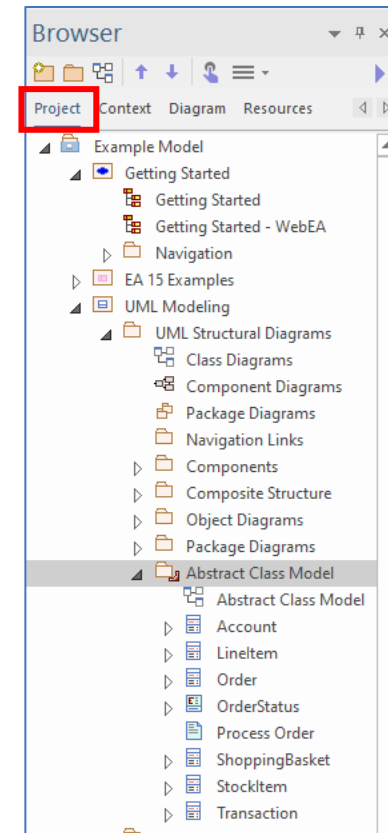
- Useful shortcuts
  - (Ctrl+SHIFT+C and Ctrl+V, Ctrl+Up/Down arrow - see previous page)
  - F2 key - change name
  - Ctrl+Delete keys - delete from model (i.e. from all diagrams)
- Drag an element from the Toolbox onto the Browser (a Package or an Element) - create a new element

# Useful Features in the Browser

- Find Context Item button in the Toolbar 
- Favourite Packages from the Toolbar button



- Context tab - show items only in the target Package



# How to Build Structure for the First EA Users

## 1. Introduction

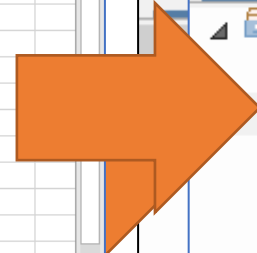
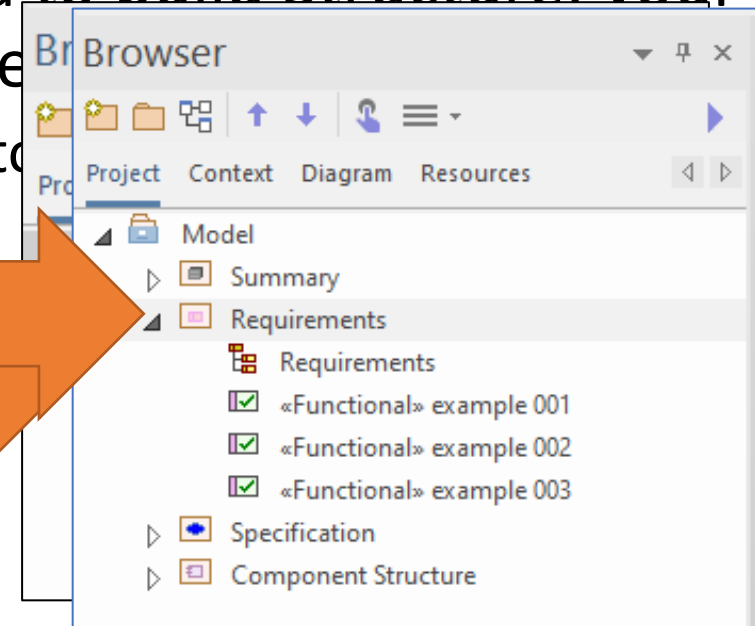
### 1.1 Purpose

This design will detail the implementation of the requirements as defined in the Software Requirements

If y

idea to build Structure. your

ID	Description	Requested By	Priority	Notes
Req001	example 001		High	
Req002	example 002		Low	
Req003	example 003		Medium	



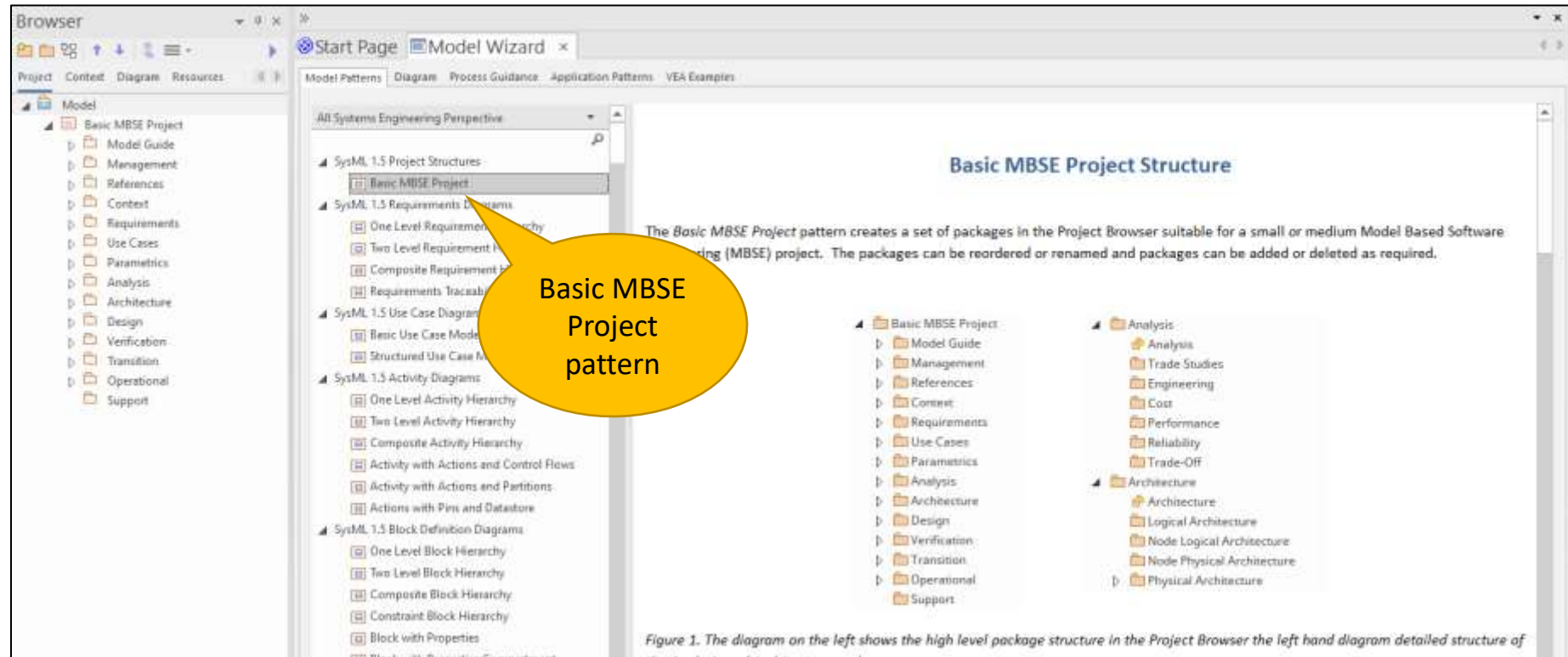
B

- Process** – One instance of a workflow – Cf Request, for example
- Task** – One step or piece of a workflow
- Metrics Reporting** – Displays process breakdown by task and the amount of time it takes, on average, to complete a task in a process.
- Task Views Reporting** – Displays a single process type (Binder Request, Core, etc) tasks
- Process Specific Reporting** – Process specific reports where the filters are defined on a per process basis

Word/Excel is NOT the best for EA.  
to build Structure in EA.

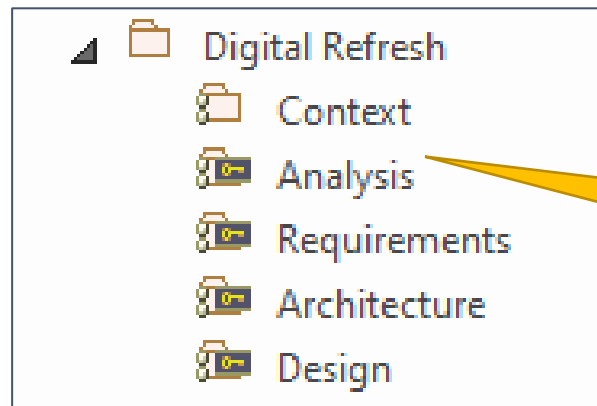
# How to Build Structure for the First EA Users

- Some profiles (modelling languages) offer Patterns which are blank packages structure



# How to Build Structure for the First EA Users

- Packages are target of many EA features, so it is a good idea to consider which EA features you use
  - source code generation, document generation, relationship matrix, specification manager, ...



Version history of these  
5 Packages are stored  
separately.

# Tips to Build better Structure

- Specify order in Packages rule to find items/missing items

Example:

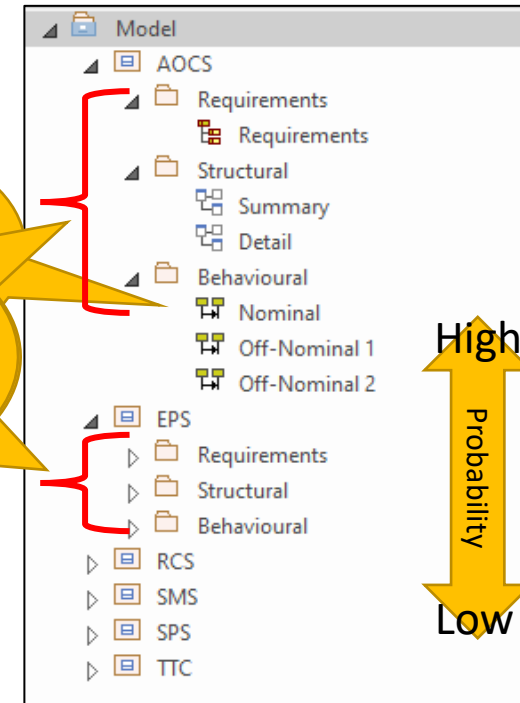
- About Sequence diagrams in a Package, normal case is the first, then alternative cases are next, sorted by possibility of each case

- Specify each Package Structure and Package naming rules

Examples:

- First level Packages (i.e. Views) are Components
- Each first level Package has three child Packages 'Structural' and 'Behavioural'
- 'Structural' package has Class diagrams ('Summary' and 'Detail')
- 'Behavioural' package has Sequence diagrams

Normal scenario  
Same Package structure, Same Diagram type and name in each Package



# Tips to Build better Structure

- It is difficult to find best structure when you use EA initially
  - Because contents are not fixed yet, i.e. you cannot fix what kind of diagrams and elements are necessary to describe (visualise) your target
  - In the first use of EA, create Packages as you feel, then re-structure Packages (and add/remove Packages) to be better
  - You can find structure after three (3) project, then create your own Pattern

# Thank you!

I hope this session could help your better Enterprise Architect life.

- I will share this slide soon at the Sparx Systems Japan Teams channel
- Please drop a post in the Teams channel or email to [tkouno@sparxsystems.jp](mailto:tkouno@sparxsystems.jp) if you have any questions, comments, ideas.